

For additional tools, documentation and terms and conditions see www.sentix.co.uk

sentix DataLibrary documentation

This document describes the sentixDataLibrary software (Version 2.0). This software enables users to access the sentix database via a .net API/DLL. The ZIP-package contains a **COM-visible .NET-DLL**, an app to test the DLL and an Excel-database application.

Filename	Function
sentixDataLibrary.dll	A .net-DLL with a simple set of functions to access the sentix database from any .net aware programming environment. The DLL is COM-visible and is therefore also accessible from COM applications like Microsoft Excel. The DLL is compiled under the .NET 3.5 Framework.
sentixDataDownloader.exe	A small app for testing purposes.
sentixExcelDB.xls	A Excel 2007 and higher compatible spreadsheet with built macros for a Excel driven database for sentix data.

You can download the ZIP-package from the download space at

http://www.sentix.de/index.php?option=com_rokdownloads&view=folder&Itemid=235&lang=en

Prerequisites

You need the **.net Framework 3.5** successfully installed on your computer. If you use Office 2003, install the following fixes to run the Excel application:

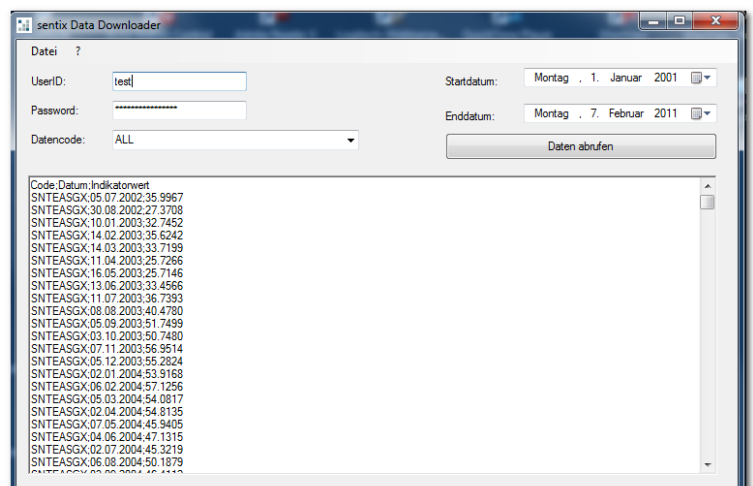
- Office 2003 SP3
- Update für Office 2003 Junk-Mail-Filter (KB2596972)
- Update für Office 2003 (KB2543854)
- Update für Office 2003 (KB907417)

Installation

After downloading the ZIP-package from our website, please unpack all files to a folder on your hard drive.

You can immediately start the EXE-file from your folder. Type your sentix UserID and your password into the boxes of the application, choose "ALL" for 'Datencode' and press the "Daten abrufen" button.

In the lower part of the window, after a few seconds you should see some sentix data, same like the picture on the right. If this is true, the library and your credentials work correctly.



If you cannot see any data, please check that you typed in your user ID and password correctly (case-sensitive). If you have not any valid subscriptions, you also do not see any data.



Excel-DB-Setup

Additionally, to use the Excel-DB application, you must register the `sentixDataLibrary.dll` using the `regasm.exe` program. Please ask your administrator for assistance if you do not know how to register a DLL. Typically, this program is located under `C:\Windows\Microsoft.NET\Framework\v2.0.50727`, otherwise use your search function to locate the file.

Register your sentix library via a call of the `regasm` application (administration rights will be required):

```
regasm.exe c:\DataApp\sentixDataLibrary.dll /tlb:c:\DataApp\sentixDataLibrary.tlb /codebase
```

Replace “`c:\DataApp`” with your installation folder. This command creates the necessary TLB-File in your application folder.

Now start Microsoft Excel and add your installation folder to your trusted sites. Otherwise, you have to enable macros each time you load the `sentixExcelDB.xls` (if default security settings apply). After you load the XLS the first time, please type your sentix UserID into field “F2” of the worksheet ‘Overview’.

Managing data

The `sentixExcelDB` workbook will manage sentix data on all worksheets within the file. You can add and name worksheets as you like. Some sample worksheets with sample codes are already in the file. The program determines from the first row of each worksheet which data series to load. The application recognizes only full sentix data codes with eight digits. Because the program loads the date and the value for each series and data point, please leave at least one column free after each data code.

On the ‘Overview’-worksheet you can specify which dates to load. Normally you should not adjust these settings as the default loads all available data. Please remind yourself that the application always loads all data. Do not store any custom formulas or charts on a worksheet as the software may overwrite any cell during the update process.

If you want to set-up charts or own calculations, use a separate Excel file or place a new worksheet in the file. Set references to the data in `sentixExcelDB.xls`.

Using the DLL

After adding a reference to the DLL in your development software, please inspect the object model with your object browser. There is only one object contained in the DLL: `DataHistory`. For valid inputs into different methods, please consult the `DataDownload` Interface Description. You have to specify a valid user ID, your password, your API hash code (you find this in My sentix tab “Personal information” - “Download” and a data code (“ALL” is the default).

The `RequestData`-method returns a string with the sentix data. You can parse that string to match your specific needs.

Support

If you have any questions or need assistance in using this software, please contact our help desk at support@sentix.de